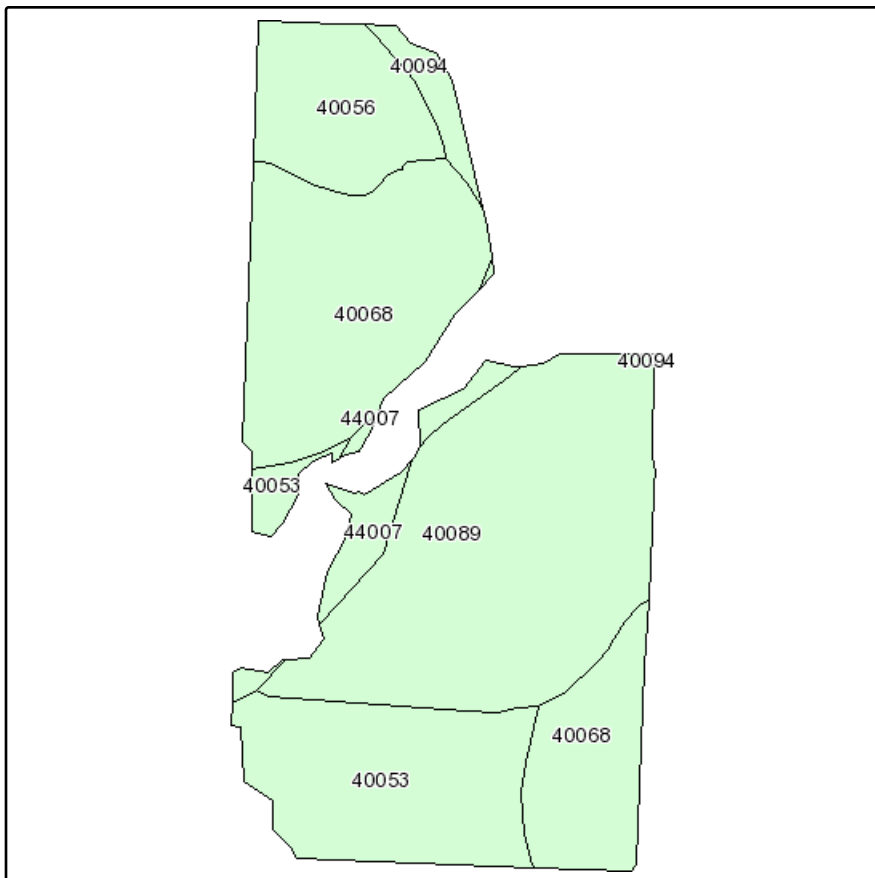
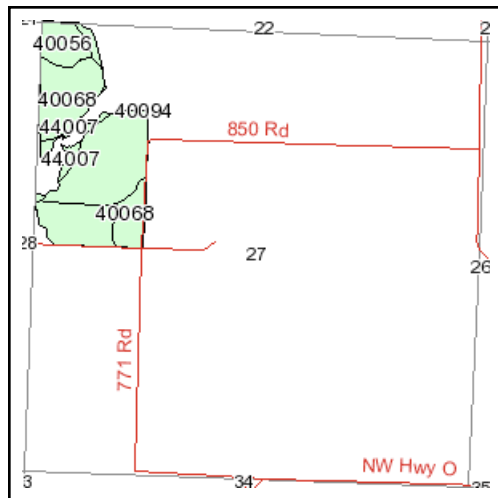


Soils Map



Fsa borders provided by the Farm Service Agency as of May 23, 2008.
Soils data provided by USDA and NRCS.



State: **Missouri**
 County: **Henry**
 Location: **027-043N-027W**
 Township: **Big Creek**
 Acres: **57.7**
 Date: **6/9/2010**



Maps provided by:



©AgriData, Inc 2008
www.AgriDataInc.com

Code	Soil Description	Acres	Percent of field	Non-Irr Class
40089	Roseland silt loam, 2 to 9 percent slopes	20.4	35.3%	IVe
40068	Hartwell silt loam, 1 to 3 percent slopes	17.8	30.8%	Ile
40053	Deepwater silt loam, 2 to 5 percent slopes	10.6	18.4%	Ile
40056	Deepwater silt loam, 5 to 9 percent slopes, eroded	5.7	9.9%	IIIe
44007	Muldrow silt loam, 0 to 2 percent slopes, rarely flooded	2.1	3.7%	IIw
40094	Summit silty clay loam, 5 to 9 percent slopes, eroded	1.1	2.0%	IVe